

Facades available:

Callington, Harrogate, Kent	
Lancaster, Sheffield, Swansea	
Wiltshire, Eastwood	
Overall home width	11.03m
Overall home length	19.91m

Residence	133.3m ²	14.4sq
Garage	36.3m ²	3.9sq
Porch	4.6m ²	0.5sq
Alfresco	7.6m ²	0.8sq
Total	181.8m²	19.6sq

FLOORPLAN OPTIONS

We personalise our floorplans. Talk to us about our huge range of ready-to-go design options or simply visit www.burbank.com.au/south-australia for more details.

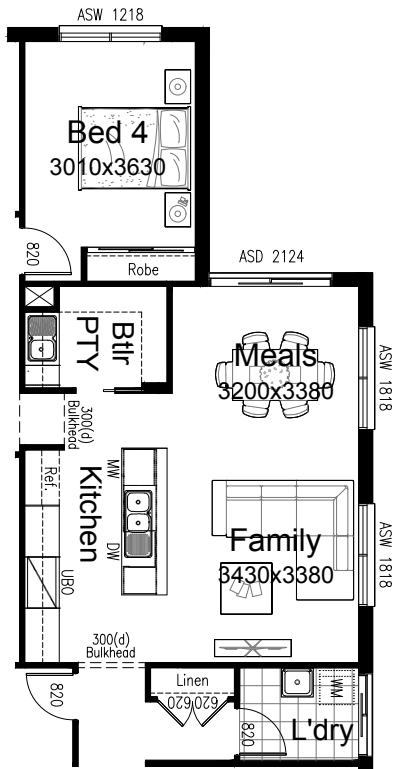
Listed details based on Sheffield facade floorplan (illustrated)

*Copyright conditions. All photos and illustrations are representative only. Floor plans and specifications may be varied by Burbank without notice, the dimensions are diagrammatic only and a Building Contract with final drawings will display correct dimensions and detail. All designs are the property of Burbank and must not be used, reproduced, copied or varied, wholly or in part without written permission from an authorised Burbank representative. Copyright Burbank Australia (SA) Pty Ltd. ABN 96 165 533 406. BLD 266709.

Call 13 BURBANK
Visit burbank.com.au

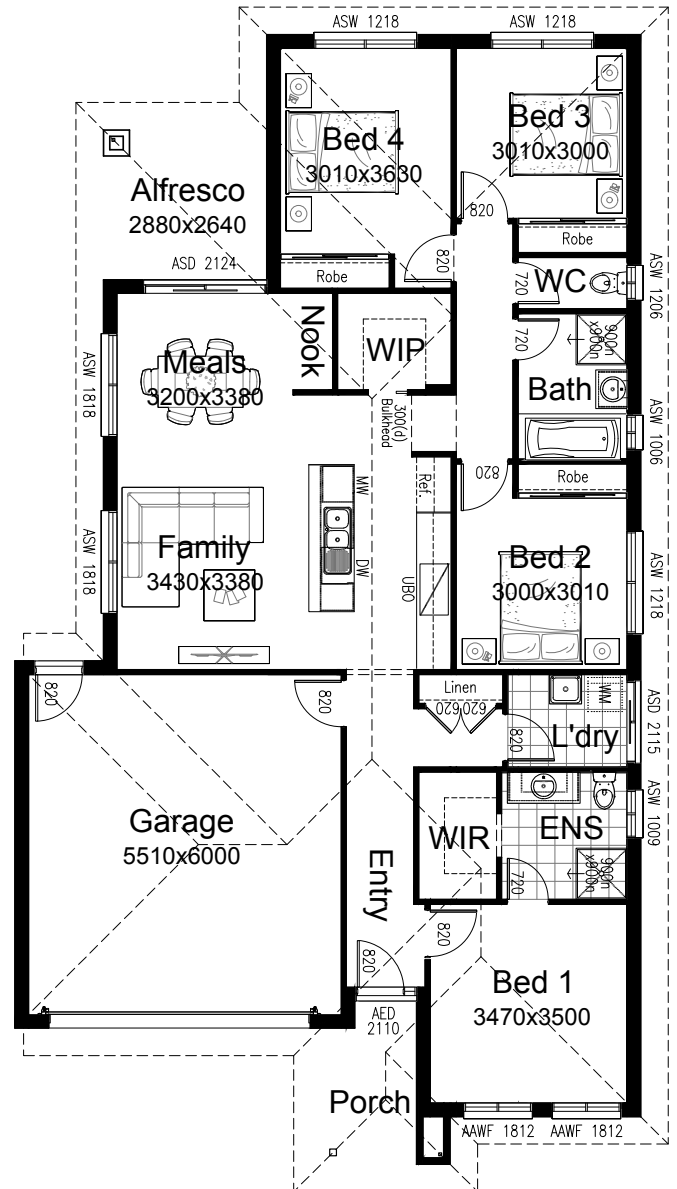
OPTION K1

Provide Butler's Pantry option which moves pantry to other side of kitchen. Kitchen includes 900mm underbench oven & 900mm cooktop with 900mm retractable rangehood, 450mm drawer unit, dishwasher provision, microwave provision with pot drawer,
1No. 800mm base cupboard,
2No. 900mm base cupboards,
2No. 900mm overhead cupboards
Butler's Pantry includes bench top,
1No.900mm base cupboard with single bowl sink,
1No. 350mm base cupboard,
1No.900mm overhead cupboard,
1No. 350mm overhead cupboard,
4No. 450mm shelves,
720mm cavity sliding door, additional tiled splashback to suit.
Increase width of Bed 4 by 630mm by removing nook and increase the width of linen cupboard next to laundry by 560mm.



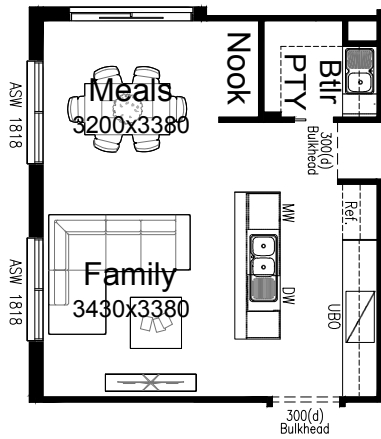
OPTION EP1

Provide mirrored rear section of the home. Relocate WIP & Nook to opposite side of kitchen, flip Bath and WC and increase width of linen cupboard by 560mm.



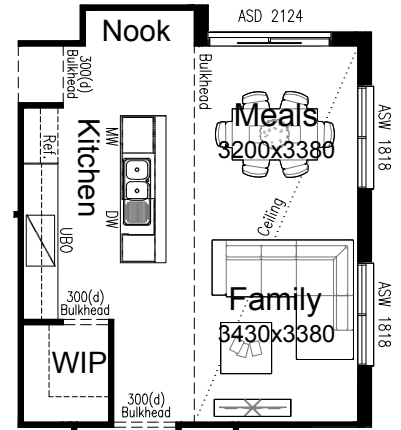
OPTION K2

Provide Butler's Pantry in conjunction with option EP1. New Butler's Pantry includes additional bench top, 800mm base cupboard with single bowl sink, 350mm base cupboard, 800mm overhead cupboard, 350mm overhead cupboard, 4No. 300mm shelves, 4No. 450mm shelves, 720mm cavity sliding door, additional tiled splashback to suit.



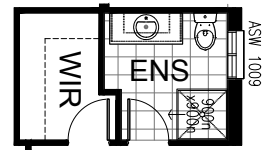
OPTION IP2

Provide raked ceiling option to Meals and Family with bulkhead and standard ceiling height over Kitchen / Nook / WIP.



OPTION ENS1

Provide raked ceiling option to Meals and Family with bulkhead and standard ceiling height over Kitchen / Nook / WIP.



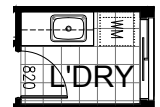
OPTION IP1

Provide retreat area in lieu of 4th bedroom & Nook.



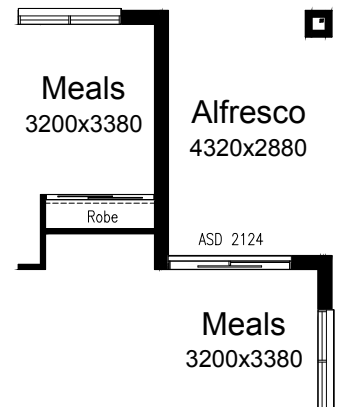
OPTION LD1

Provide Laundry upgrade with laminate base cupboards and stainless steel inset trough including
1No. 800mm base cupboard,
1No. 400mm base cupboard,
1No. 800mm overhead cupboard,
1No. 400mm overhead cupboard & additional benchtop and tiled splashback to suit.



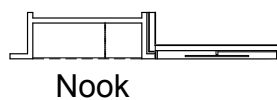
OPTION EP2

Provide Grand Alfresco option with additional light point & tiled roof above. Option adds 4.84m² to the overall house area.



OPTION IP3

Provide desk option to nook with 1no 600mm drawers and laminated bench top.



*Copyright conditions. All photos and illustrations are representative only. Floor plans and specifications may be varied by Burbank without notice, the dimensions are diagrammatic only and a Building Contract with final drawings will display correct dimensions and detail. All designs are the property of Burbank and must not be used, reproduced, copied or varied, wholly or in part without written permission from an authorised Burbank representative. Copyright Burbank Australia (SA) Pty Ltd. ABN 96 165 533 406. BLD 266709.